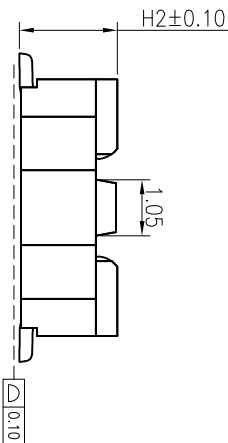
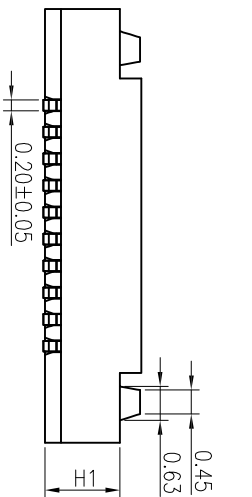


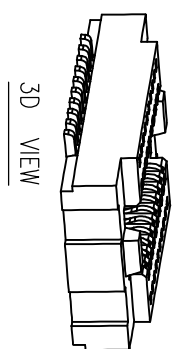
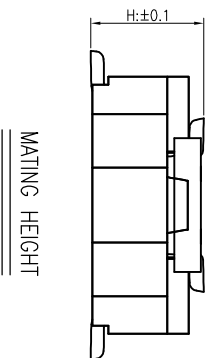
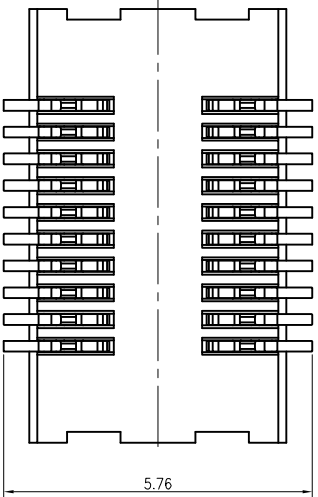
NOTES:  
 HOUSING: HIGH TEMPERATURE HOUSING UL94V-0  
 WITHSTANDS IR AND VPR SOLDERING METHODS.  
 CONTACTS: PHOSPHOR BRONZE.  
 PLATING: GOLD PLATED.  
 ELECTRICAL CHARACTERISTICS:  
 CURRENT RATING:0.3 AMP.  
 INSULATOR RESISTANCE:1000MΩ MIN. AT DC 250V.  
 CONTACT RESISTANCE:90MΩ MAX. AT DC 100MA.  
 OPERATING TEMPERATURE:-55°C ~+85°C .

RECOMMENDED PCB PATTERN DIM.  
 TOLERANCE : ±0.05



MATING HEIGHT	PLUG (H)	SOCKET (H)	H1	H2
1.5	1.5	1.5	0.9	1.4
2.0	2.0	2.0	1.4	1.9
2.5	1.5	2.5	1.9	2.4

NO. of contacts	Dimensions			
	A.	B.	C.	D.
10	5.60	2.00	3.50	3.90
12	6.10	2.50	4.00	4.40
16	7.10	3.50	5.00	5.40
18	7.60	4.00	5.50	5.90
20	8.10	4.50	6.00	6.40
14	6.60	3.00	4.50	4.90
16	7.10	3.50	5.00	5.40
18	7.60	4.00	5.50	5.90
20	8.10	4.50	6.00	6.40
22	8.60	5.00	6.50	6.90
24	9.10	5.50	7.00	7.40
26	9.60	6.00	7.50	7.90
28	10.10	6.50	8.00	8.40
30	10.60	7.00	8.50	8.90
32	11.10	7.50	9.00	9.40
36	12.10	8.50	10.00	10.40
40	13.10	9.50	11.00	11.40
50	15.60	12.00	13.50	13.90
100	28.10	24.50	26.00	26.40



3D VIEW

APPROVALS		DATE	
DRAWN	ZHWEI,CHEN	2015.07.07	
CHECKED			
APPROVALS			
TOLERANCES ARE		30~以上 ±0.30	ANGLE
		10~30 ±0.20	±2°
		5~10 ±0.15	
		~5 ±0.10	
TITLE:		0.5MM BTB 標準立式母座H1S-2S	
PART NO.		GP02-5XX-GXXS-WOR	
UNIT: mm		SCALE: 1:1	
DRAWING NO.		PROJ.	
		SHEET 1 OF 1	
ECN NO.	REV.	DATE.	DESCRIPTION.
	A		NEW